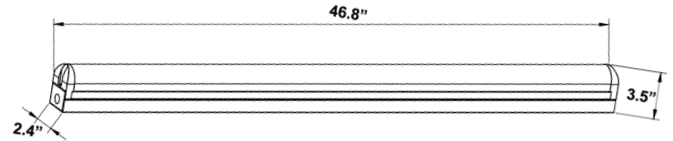




**DIMENSIONS:**

46.8"(L) x 2.4"(W) x 3.5"(H)



CSL-4FT-40W-50K-D  
CSL-4FT-40W-40K-D  
CSL-4FT-40W-35K-D

**LED ARCHITECTURAL ROUND SUSPENDED  
COMMERCIAL LIGHTS (4FT.)**

Ideal for hotel, offices, retail outlets, restaurant, parking garages, storage room, conference room, education facilities and more.

**ELECTRICAL SPECIFICATIONS:**

- Voltage: 120-277VAC 50/60Hz
- Wattage: 40W
- Power factor: >0.95
- Efficacy: 115LM/W

**HOUSING SPECIFICATIONS:**

- 4 Feet long
- Steel Thickness: 24 Gauge
- Metal housing, White powder coated
- Operating temperature: -13°F ~ 104°F
- Lifespan: 50,000 Hrs.
- IP rating: IP20

**CERTIFICATIONS: UL, DLC**



MODEL	WATTS	VOLTAGE	LUMENS	COLOR TEMP
CSL-4FT-40W-50K-D	40W	120~277VAC	4600LM	5000K
CSL-4FT-40W-40K-D	40W	120~277VAC	4600LM	4000K
CSL-4FT-40W-35K-D	40W	120~277VAC	4600LM	3500K

**LIGHTING SPECIFICATIONS:**

- Dimming: 0~10V dimmable
- Lens: Prismatic
- Total lumens: 4600LM
- Color temperature: 5000K/4000K/3500K
- Color rendering index: >80

**WARRANTY: 5 years**

